

The Great Train Expo by Dennis Peoples

Hi Gang! The Great Train Expo is rapidly approaching. What better way to spend you're Valentine's weekend with your second love (*and that is how the fight started?*). Setup is **Friday, February 13th at noon**. Dioramas or scenery can start later Friday and finish on Saturday morning between 7:00 & 10:00 a.m. There is no water feature this year. **The show hours are from 10:00 a.m. to 4:00 p.m. on Saturday and Sunday and tear down is immediately after.**

Again this year, we will have a dispatcher and sign-up sheets for each day to schedule each hour's engineers. This year we will be raising the bridge more frequently as the sound draws attention and it allow easier access to the inside of the layout, say every 15 or 20 minutes. The outside loop will be for live steam and battery power. The inner loop will be track power with the club's power pack and will run electric and possibly battery powered, no cross-overs.

We will need club members there to visit with the public, hand out the Garden Railway and Worlds Greatest Hobby booklets, and take orders for the up-coming Railroads in the Garden Summer Tour booklets, and security. We keep striving for a better time every year so let's have lots of laughs, create some great memories and have a great time. Breakfast anyone?

I have several free passes, parking not included. Those people who want to participate need to **contact Dennis Peoples at dennispeoples@verizon.net ASAP**. Priority for the passes will first be given to setup crews.

2009 Annual Meeting

The Annual Meeting of the RCGRS was hosted by Joe Chesney at his house in Tigard, OR and the site of his Underground Railroad.. This unique railroad is located on a steep bank under the house. There is also a large extension of the railroad that runs in the outside yards. A large room adjacent to the railroad was originally built as a garage for a large RV vehicle. The room now serves as a shop and recreation area. The walls display many of Joe's collection of locomotives and rolling stock.

Joe Chesney has other properties in Arizona where he and his wife spend part of each winter. As a result, Joe wants to downsize to a smaller house. The current house and railroad are for sale.



The pool table serves as a temporary base for a winter RR scene.



A scene on the Underground Railroad.



A scene on the Underground Railroad.



Walls of trains? All of the walls display Joe's trains.

Disaster On The Lake View and Boulder Railway **by Jeff Lange**

On January 1st, at 10 p.m., approximately 60 feet of my 100 foot retaining wall on the west side of the Lake View and Boulder Railway started to lean dangerously toward my neighbor's property. Vancouver had experienced quite heavy snowfall over the holidays. Then close to 3 inches of rain fell for 24 hours starting on New Year's Eve. Because of this heavier than normal amount of precipitation, the soil was completely saturated, and the combined weight of the existing snow, rainfall, and sat-

urated soil was too much for the retaining structure. It eventually gave way, and had to be removed by a large backhoe and operator on January 2nd, resulting in some rather large piles of debris in our yard. Sadly, I had just recently finished rebuilding the entire 6 to 8 foot retaining wall during the summer of 2008. I was planning on continuing with the new line around the rest of the perimeter of the back yard. Now, I will have to go back to the drawing board and start from scratch. This time I will plan a different, and much stronger support system for the sloping hillside on the west edge of our property.



December 22, 2008 — There is a railroad somewhere under the snow. The rain is yet to come.



The missing fence and retaining wall after the deluge.

For those of you who have rebuilt your own railroads in the past, or are currently building your first

one, I'm sure you know what efforts are involved. For those members that have not started their own railroad yet, please don't despair. Many of our wonderful club members are more than willing to lend a hand to help you get started on your new layout, starting with a planning session at your home. Later we will come back and begin helping lay track, move soil and rocks, and help create your new railroad empire.

For the rest of this winter and until next summer when I will once again have time to start rebuilding the layout, I have temporarily placed 9 bales of straw over the entire project to protect the soil from further erosion. Fortunately, no trains, track, buildings, or miniature plants were lost or damaged in this weather-related event. The new 14 foot steel bridge had not yet been installed, so it will have to wait just a little bit longer to have it's first trains crossing the magnificent span. Hopefully, by August of 2010, the new Lake View and Boulder Railroad will once again be ready to host visitors, and have mixed freight and passenger service running smoothly, as it has in the past 13 years, since I drove the first golden spike back on September 24th, 1995.



There used to be a railroad here. The backhoe has been here to recover the materials for the fence and retaining wall. Straw has been laid to prevent further erosion.

More Winter Railroading

These pictures taken on January 25 around 9:00 a.m. at Ron & Merlene Bacon's Bear Mountain &

Whiskey Creek RR. The Heisler was used to clear the tracks of snow. Both trains ran on battery & RC around the complete lay out.



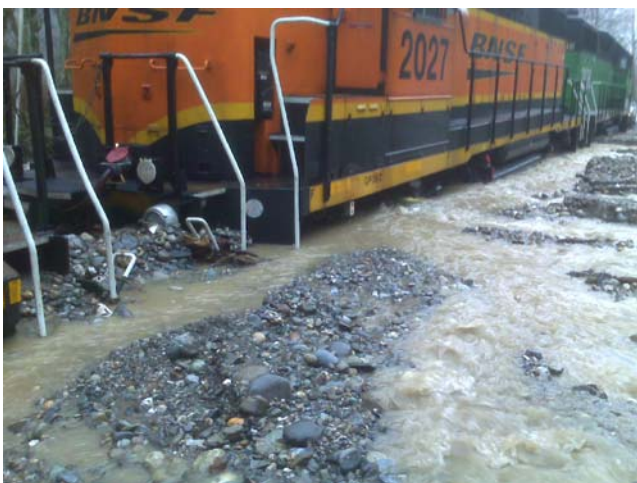
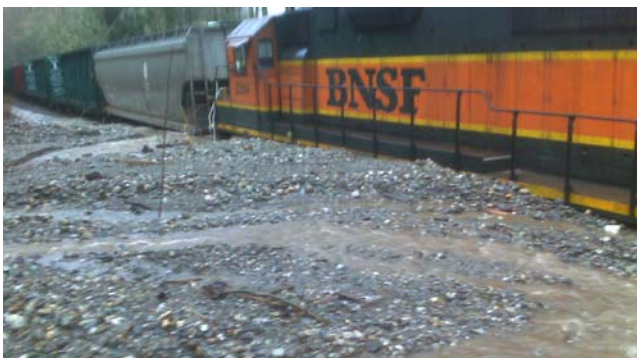
DR & GW 360 2-8-0 with passenger car



Heisler with logs cars and mixed freight

December 2008 Winter Wonderland

After the snow storms on December 20th and 22nd, the following snow melt and rains washed out the track on Snoqualmie Pass and stranded a BNSF train. How would you like to repair this mess? How do you get equipment there to start digging out the train?



RCGRS Officers and Staff

President, Gary Lee

503-695-2550, garylee@constructavision.com

Vice President, Jeff Lange

360-696-0799, jeffdlange@comcast.net

Secretary, Barbara Clark

360-737-0176, clarkdani@comcast.net

Treasurer, Steve Cogswell

503-342-6128, scogswell@tkw.com

Yardmaster, Dennis Peoples

503-997-7049, dennispeoples@verizon.net

Annual Garden RR Tour Chair, Bill Derville

503-645-1771 bderville@generaltool.com

Club Store Chair, Margaret Kookan

360-695-0389, dmkookan@pacifier.com

Open House and Education Chair,

Christina Brittain

360-837-3711, quinnmountain@aol.com

Module SIG Chair, Dennis Peoples

503-997-7049, dennispeoples@verizon.net

Newsletter Editor, Allan R. Warrior

503-648-8112 arwarrior@verizon.net

Webmaster, Allan S. Warrior

warriora@yahoo.com

Immediate Past President: Darrel Dunham

253-222-8367, dwdunham.@msn.com

Editor's Note: The deadline for the March 2009 newsletter is February 25, 2009.

Schedules & Timetables

Make sure you check the calendar on our Website at <http://www.rcgrs.com/> for the most up-to-date schedules and timetables.

It is the Society's policy to attempt to have an event or open house on every second Saturday of the month. Other and additional dates during a month are also available and encouraged. Anyone interested in having an Open House or sponsoring an event, please contact **Christina Britain**.

OPEN HOUSE INFO NEEDED FROM HOST:

Layout info for those who want to run their own trains?
Can members run trains? Any limitations, ie., no steam?

What is minimum track radius?

What is power supply?

Is layout FN³ compatible?

Education: Is there a topic of interest host will present?

Unusual or crafted feature that makes RR unique?

Directions:

What Host will provide:

February 14, 15, 2009; Saturday, Sunday;

Great Train Exposition, Expo Center, Portland, OR. Volunteers will be needed for set up and running trains. Call Dennis Peoples to volunteer (see announcement on the first page).

March 14 & 15, 2009:

Let's Build A Turntable

by Gary Lee

I will offer a clinic to club members on constructing a manual turntable for your railroad. Two types will be offered; wood "A" frame gallows 30-inch or 32-inch, or plate girder deck at 36inches.

I will produce a limited number of the kits (12) for this clinic, so please sign up early. Enroll at gary-lee@constructavision.com and specify type and scale.

Where: Constructavision

When: March 14th & 15th, 2009

Cost: \$100.00 for each kit, clinic is free.

April 2nd weekend: Ron and Merlene Bacon, Hillsboro, OR

May 2nd weekend: Dave and Margaret Kookan, Vancouver, WA

June 20, 2009, Saturday: RCGRS Annual Tour of the Garden Railroads

July 5 through July 11, 2009: National Garden RR Convention, Denver, CO

July 11, 2009, Saturday: Gary and Jonette Lee, Corbett, OR

August 2nd weekend: Nick Kelsey, Canby, OR

September 2nd weekend: Doug and Marilyn Watson, Tigard, OR

October ? weekend: Annual Ghost Train Event. Plan now to decorate a car or locomotive (or train) with a ghoulish delight. Mike & Teri Greenwood

November 14, Saturday: Annual Buffet/Banquet

December 5, 2009, Saturday, 4:00 to 9:00 p.m.: Shannon and Millie Pratt are hosting a Christmas train Open House/Potluck dinner.

December Friday Evening: Jan and Rae Zweerts